

# indosole®

2016 · ELEMENTS





WEAR IT AND MAKE IT YOUR OWN

# ELEMENTS





04



ELEMENTS 2016 COLLECTION

05



## THE INDOSOLE STORY: FROM PROCESS TO PRODUCT

It takes thousands of years for a tire to decompose in a landfill. Right now, millions of waste tires are polluting the land, clogging the rivers, and wreaking havoc on the beautiful islands of Indonesia. We believe these tires can be put towards a better use.

Indosole represents a lifestyle of resourceful creation. We repurpose old tires by sanitizing and cutting them into the soles of our footwear. We also take other waste materials and give them new life as fashionable and functional goods. There is no melting down or the use of fuel-powered machines, just strong hands and minds.

Please join us on a quest to save 1 million waste tires from landfills.

Thanks for your contribution, love, and support,

Indosole  
#TiresToSoles | #SolesWithSoul



INDOSOLE.COM





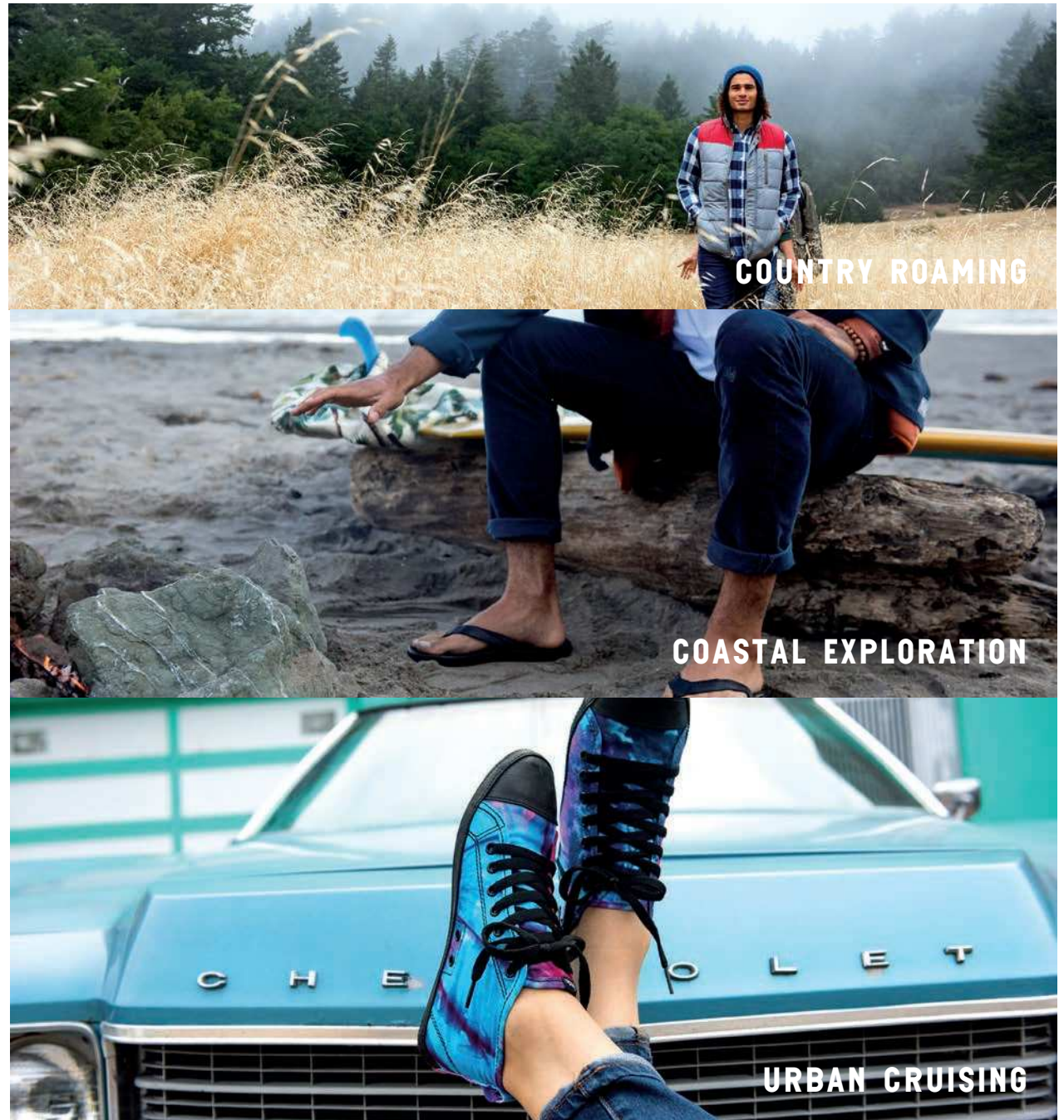
# ELEMENTS

'Elements' is a tribute to the wonders of nature and the various environments we immerse ourselves in. Whether natural or man-made, the places we go to excite and inspire us, and we like to think the Indosole crew feels the same way.

This is why we put a great deal of thought and time into making sure Indosole products can move seamlessly from one setting to the next, accommodating active lifestyles filled with spontaneity, discovery, and positive vibes.

We aim for comfort, durability, and versatility – products that can take you from the city sidewalks to the edge of tide pools to the depths of forests and rivers, and back again. So wear it and make it your own. Go where you want to go and do what you like to do.

**BE IN YOUR ELEMENT.**





08

09

## SAN FRANCISCO · BALI, INDONESIA

FROM THE SANDY BEACHES OF BALI TO THE URBAN HUSTLE OF SAN FRANCISCO, WE INVITE YOU DOWN A PATH THAT INTERSECTS AT A BEAUTIFUL PLACE WE CALL "BALIFORNIA" WHERE VIBRANT COLOR MEETS FUNCTIONAL COMFORT.



### 100% REPURPOSED TIRE SOLES

Indosole's signature tire tread soles are made from 100% repurposed tires that are salvaged from local mechanics and landfills. The tires are sanitized, cut, and shaped into soles for our footwear



### EARTH FRIENDLY PACKAGING

Recycled and Repurposed packaging and hangtags



### VEGAN MATERIALS

The uppers of all our footwear models feature 100% vegan materials. No animals, no toxic processes, just good old fashioned materials that are locally sourced.



### ORGANIC COTTON

All of our canvas footwear features 100% organic cotton that is locally sourced, sewn tight and durable.



### HAND-DYED INDONESIAN BATIK

Our batik is hand-dyed with traditional Balinese wax-resist methods that are free from toxic chemicals and fuel powered machinery.

STYLING: JESSICA SULLIVAN

INDOSOLE.COM





## WOMEN'S COLLECTION

ALL ITEMS ARE CUSTOM DESIGNED AND FITTED WITH YOU IN MIND. WE COMBINE THE COMFORTABLE EASY-GOING LIFESTYLE OF CALIFORNIA WITH THE VIBRANT COLORS OF BALI. EVERYTHING IS VERSATILE AND READY FOR ANY ADVENTURE. WEAR IT AND MAKE IT YOUR OWN.



BLACK



GALAXY



ARMY



BLACK/WHITE TIE DYE



CREAM

## THE KOTA

The Kota, meaning “city” in Indonesian, is designed to be your go-to shoe for urban cruising. This high top features custom tire innertube voxing on the sidewall and toe cap. Zip it up, zip it down, get out on the town.

### FEATURES

- 100% handcrafted with repurposed tire sole
- No animals, no fuel powered machinery
- High quality stitching
- Eva foam insole with arch support
- Embroidered woven logo labels
- Innertube voxing - Made from real tire innertubes
- Innertube toe cap - Made from real tire innertubes
- Zipper for easy on and off and breathability
- Custom dyed organic canvas uppers
- Machine washable - Dry in the sunshine



## FEATURES

- 100% handcrafted with repurposed tire sole
- No animals, no fuel powered machinery
- High quality stitching
- Eva foam insole with arch support
- Embroidered woven logo labels
- Innertube voxing-Made from real tire innertubes
- Custom dyed organic canvas uppers
- Machine washable - Dry in the sunshine

014



BLACK



TRAILS BLACK/YELLOW



TRAILS RED/WHITE



CLOUDS

## THE JJ

Please meet your new everyday versatile lace-up shoe. The JJ is short for "jalan-jalan," Indonesian slang for going around and seeing the sights. The JJ is there for you whether you're riding your bike to the beach, walking to a local cafe or cruising around the city.



# THE KELAPA

“Kelapa” is the Indonesian word for coconut, and while you may not live near any coconut-bearing palms, we hope this style will bring you a little closer to the tropics. Featuring a slightly pointed toe and a lower cut, its sophisticated but casual look will take you from city to beach and everywhere in between. Available in a variety of colors and hand dyed batiks.



ARMY



TRAILS  
EMERALD/BLACK



GALAXY



LAVENDER



CHARCOAL



MARIGOLD YELLOW



CORAL RED



BLACK



BLACK PALM

## FEATURES

- 100% repurposed tire soles
- Vegan canvas uppers
- Machine washable and removable footbed
- Internal elastic for customized fit



## FEATURES

- 1 cm wide crisscross straps across top of foot
- 1 cm wide heel strap
- Vegan suede foot bed
- Repurposed tire soles
- Hidden elastic on heel strap for customized fit



GALAXY



NATURAL



BLACK

## THE BIKU

Named after our favorite restaurant in Bali, the Biku sandal is a unique combination of function and style. Strappy and versatile, the Biku can be dressed up for a summertime party, or dressed down for a casual day at the park. It features canvas straps and a vegan suede footbed.





GALAXY

TRAILS  
COBALT/WHITETRAILS  
EMERALD/BLACK

BLACK



BLACK PALM



GARUDA



LAVENDER

## THE IKHANNA

A nomad's lifestyle is all about versatility. While transitioning from beach mode to city mode, Indosole has you covered. The Ikhanna offers our ladies the support of an urban walking shoe mixed with fashionable flair. It features canvas uppers and a vegan suede footbed.



### FEATURES

100% handcrafted women's leisure sandal  
No animals. No fuel powered machinery.  
Vegan suede braided toe thong  
High quality stitching. YKK zipper in rear  
EVA foam Insole wrapped with vegan suede footbed

# THE SANDAL COLLECTION

022



BANANA WEAVE



TAN BURLAP

## THE INNERTUBED

With a reputation of re-purposing materials, we felt an urge to further explore the space of the local landfills. With soles and straps made from tire innertubes, this sandal is incredibly lightweight, flexible, and comfy. These slip-on-and-go sandals are perfect for quick trips to the beach, lounging around the house, or a day out with your friends.



BLACK



PINK PALM

**FEATURES:** 100% handcrafted flip-flop / No animals or fuel powered machinery / Vegan leather footbed / Durable and water resistant / Nylon toe thong / .5" wide straps / Sole and straps made from 100% repurposed truck tire innertube / High quality stitching / EVA foam insole with embedded arch support / Low profile and flexible

## DOUBLE 6

Named after the famous "Double 6" road in Bali, these flip-flops also happen to be made from 66% repurposed materials. The Double 6 features repurposed tire innertube straps, our signature tire sole, and a vegan leather underfoot. This flip-flop is low profile, ultra flexible, and durable on all terrains.



BLACK

**FEATURES:** 100% handcrafted flip-flop / No animals, no fuel powered machinery / Vegan leather footbed / Durable & water resistant / 15mm wide strap made from 100% repurposed innertubes / EVA foam insole



023



# WOMEN'S APPAREL

ELEMENTS COLLECTION. 2016



166  
PAPUA NEW GUINEA  
RAW ARABICA COFFEE BEANS  
CLEAN SOUND AND NEW

1A5Y7A5P1  
THE TROUTFITTER



BLACK PALM



PINK PALM



BLACK




WHITE

# THE BATIK PANT

For the active woman who demands comfort and style. These pants are a comfortable option for a long flight, morning stroll, and everyday yoga.



**FEATURES** 

- 100% soft organic cotton
- Hand dyed batik. Drawstring waist
- Loose fitting. Flared bottom
- Sizes available: X-Small, Small, Medium, & Large

## THE GRAPHIC TANK

A custom designed and fitted tank made from soft organic cotton with all of you in mind, fits just right, not too tight or too loose.

028



BLACK BARONG GRAPHIC

COLORED BARONG GRAPHIC

BALIFORNIA GRAPHIC

**FEATURES:** 100% soft organic cotton / Low arm holes / Loose fitting / Large "Balifornia" logo across chest / Barong mask center front available in multi color / Sizes available: Small, Medium, Large & X-Large / Screen printed label inside

## THE GRAPHIC TEE

A slim-fit tee made from soft organic cotton, and featuring hand designed graphics. Sleeves are rolled and tacked to give a fresh and versatile look.



BALIFORNIA GRAPHIC

BARONG GRAPHIC

**FEATURES:** 100% soft organic cotton / Indosole logo in black or seafoam across chest / Large "Balifornia" logo across chest / Raw edges on sleeves (roll up as you wash): intentional / Sizes available: Small, Medium, Large & X-Large / Screen printed label inside



029





⊕

**INDO GOODS**

ELEMENTS COLLECTION. 2016

SOLES WITH SOUL  
SOLES WITH SOUL



# CANVAS BEACH BAGS

A top selling item in our line, this is no ordinary beach bag. The lining is made from repurposed rice bag, making the inside waterproof and easy to clean. The canvas is double stitched with large pockets on both sides, perfect for a water container, wine bottle, or your dirty flip flops.

032



MOTORBIKE



BALIFORNIA



BARONG

CUSTOMIZE YOUR OWN BAG-DESIGN SERVICES ARE AVAILABLE



FRONT



INSIDE



ELEMENTS 2016 COLLECTION



INDOSOLE LOGO HAT



033

INDOSOLE.COM





## MEN'S COLLECTION

STICKING TO THE CLASSICS, BUT WITH OUR OWN CUSTOM DESIGNS AND FITS TO MAKE THEM INDO ORIGINALS. THESE THREADS ARE WHERE STYLE MEETS EASE.



BLACK



GALAXY



ARMY



BLACK/WHITE TIE DYE



CREAM

## THE KOTA

The Kota, meaning “city” in Indonesian, is designed to be your go-to shoe for urban cruising. This high top features custom tire innertube voxing on the sidewall and toe cap. Zip it up, zip it down, get out on the town.



### FEATURES

- 100% handcrafted with repurposed tire sole
- No animals, no fuel powered machinery
- High quality stitching
- Eva foam insole with arch support
- Embroidered woven logo labels
- Voxing made from tire innertubes
- Toe cap made from tire innertubes
- Zipper for easy on and off and breathability
- Custom dyed organic canvas uppers
- Machine washable-dry in the sunshine

#### FEATURES

- Eva foam insole with arch support
- Embroidered woven logo labels
- Voxing made from tire innertubes
- Custom dyed organic canvas uppers
- Machine washable-dry in the sunshine



BLACK



TRAILS BLACK/WHITE

SOARING EAGLE  
BLACK/WHITE

## THE JJ

Please meet your new everyday versatile lace-up shoe. The JJ is short for "jalan-jalan," Indonesian slang for going around and seeing the sights. The JJ is there for you whether you're riding your bike to the beach, walking to a local cafe or cruising around the city.



BLACK



STONE



CHOCOLATE



TIE DYE PORT RED

## THE PRAHU

The Prahu, from the word “perahu” meaning boat in Indonesian, inspires the nautical navigator in all of us. This is a year-round closet staple that transitions seamlessly from casual settings to more formal occasions.



### FEATURES

- 100% Repurposed tire sole
- No animals, no fuel powered machinery
- Custom dyed organic canvas uppers
- High quality stitching
- EVA foam insole with arch support
- Extra heel padding for increased comfort
- Embroidered woven logo labels
- Machine washable and removable footbed



#### FEATURES

- 100% handcrafted with repurposed tire sole
- No animals, no fuel powered machinery
- Custom dyed canvas uppers. High quality stitching
- EVA foam insole w/ arch support & striped denim footbed
- Extra heel padding for increased comfort
- Embroidered woven logo labels
- Machine washable and removable footbed



BLACK



STONE



ARMY

## THE PANTAI

Unfortunately, not everyone is exposed to warm Bali rays year-round, and sandals get pushed to the back of closets once the chill sets in. The Pantai, meaning beach in Indonesian, is ideal for cooler days and keeps repurposed tires on your feet no matter the season. This simple and functional shoe is ideal for a walk around the neighborhood park or cycling around town.





SOLES WITH SOUL  
SOLES WITH SOUL



# SANDAL COLLECTION

ELEMENTS COLLECTION. 2016

# INDO ORIGINALS SINCE 2009.

046



GREEN GRASS MAT

A true original, the Grass Mat is hand woven using grass from the rice fields of Indonesia. Bali's "sawah," or rice terraces, inspired us to create a comfortable, unique sandal that promotes sustainability and Balinese culture.



TAN BURLAP

The Tan Burlap sandal continues to be our top selling product. The vegan suede uppers and straps made from repurposed burlap coffee bags make for an ultra comfy fit that you'll never want to take off.



BANANA WEAVE

All natural banana leaves are dried then hand woven into sandal uppers. This model is like a '72 Honda motorbike, designed for urban cruising.



047





## DOUBLE 6

Named after the famous "Double 6" road in Bali, these flip-flops also happen to be made from 66% repurposed materials. The Double 6 features repurposed tire innertube straps, our signature tire sole, and vegan leather underfoot. This flip-flop is low profile, ultra flexible, and durable on all terrains.

048



BLACK

**FEATURES:** 100% handcrafted flip-flop / No animals, no fuel powered machinery / Vegan leather footbed / Durable & water resistant / .5 inch wide strap made from 100% repurposed innertubes / EVA foam insole

## THE INNERTUBED

With a reputation of repurposing materials, we felt an urge to further explore the space of the local landfills. With soles and straps made from tire innertubes, this sandal is incredibly lightweight, flexible, and comfy. These slip-on-and-go sandals are perfect for quick trips to the beach, lounging around the house, or a day out with your friends.



BLACK

**FEATURES:** 100% handcrafted flip-flop / No animals or fuel powered machinery / Durable and water resistant / Nylon toe thong / .5 " wide straps / Sole and straps made from 100% repurposed truck tire innertube / High quality stitching / EVA foam insole with embedded arch support / Low profile and flexible



049





SOLES WITH SOUL  
SOLES WITH SOUL

⊕ **MEN'S APPAREL**  
ELEMENTS COLLECTION. 2016

# THE GRAPHIC TANK

An essential for those warm days in the park or rides to the beach. Available with either a traditional Balinese Barong mask, Indosole logo or our custom designed Balifornia logo.

052



BARONG GRAPHIC  
COLORED

BALIFORNIA  
GRAPHIC

INDOSOLE LOGO  
BLACK

BARONG GRAPHIC  
BLACK/WHITE

**FEATURES:** 100% soft organic cotton / Custom collar fit / Sizes available: Small, Medium, Large, XL & XXL / Screen printed label inside

# THE GRAPHIC TEE

A slim fit tee made with soft organic cotton. Custom collar line and sleeves.



MOTORBIKE GRAPHIC-BLACK

BALIFORNIA GRAPHIC

BARONG GRAPHIC-COLORED



BARONG GRAPHIC-BLACK

INDOSOLE GRAPHIC-BLACK

**FEATURES:** 100% soft organic cotton / Custom collar Fit / Sizes available: Small, Medium, Large XL, & XXL  
Screen printed label inside



053

# DISPLAY RACKS

Indosole's retail floor display racks are low-cost shipping and easy to set up. The racks are double sided with removeable arms and can be placed in the middle of the floor or against a wall. Rattan hangers are provided for each pair of sandals/shoes.

054

## SMALL DISPLAY RACK

## LARGE DISPLAY RACK

DIMENSIONS:

5'H X 2.5'W X 4'D

HOLDS 50 PAIRS

DIMENSIONS:

5'H X 5'W X 4'D

HOLDS 100 PAIRS



055



## INDOSOLE CONTACT

### INDOSOLE OFFICES:

Bali, Indonesia : Manufacturing & Local Vibe Creation  
San Francisco, CA : Indo HQ, Church of Surf  
3830 Noriega St. San Francisco, CA 94122

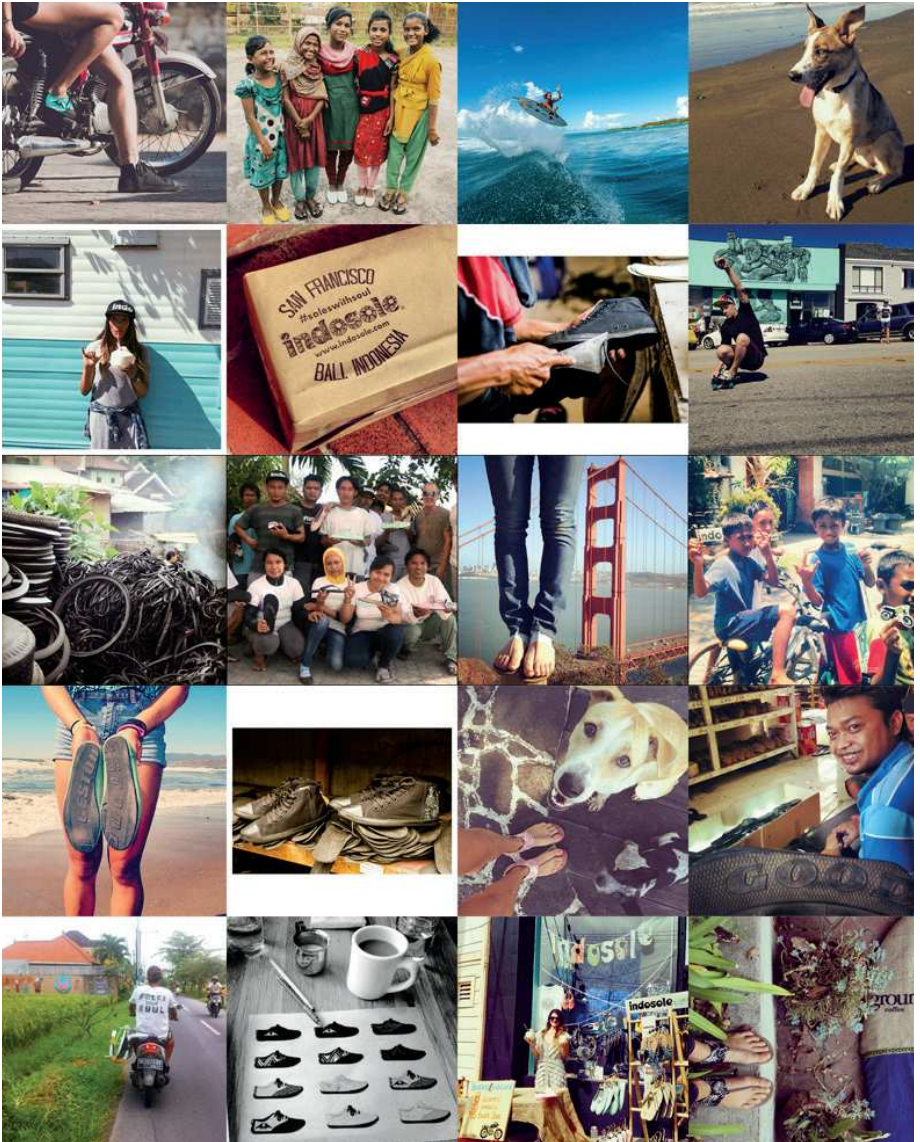
[INDO@INDOSOLE.COM](mailto:INDO@INDOSOLE.COM) | [INDOSOLE.COM](http://INDOSOLE.COM)

PH: 415-742-5662

FAX: 415-520-9578

#TIRESTOLES | #SOLESWITHSOUL





/INDOSOLE



@INDOSOLE



/INDOSOLE

#SOLESWITHSOUL