

**indosole**<sup>®</sup>  
2017 · CROSSWALK







ELEMENTS 2016 COLLECTION





STRIDING INTO NEW DIMENSIONS.

# SWALK







04



ELEMENTS 2016 COLLECTION





## THE INDOSOLE STORY: FROM PROCESS TO PRODUCT

It takes thousands of years for a tire to decompose in a landfill. Right now, millions of waste tires are polluting the land and wreaking havoc on the beautiful islands of Indonesia. Some are being burned, releasing toxins into the air. Others are becoming breeding grounds for mosquitos carrying viruses such as malaria, zika, and dengue—on the rise globally.

We believe these tires can be put towards a better use.

Indosole represents a lifestyle of resourceful creation. We repurpose old tires by cutting them into the soles of our footwear. We also take other waste materials and give them new life as fashionable and functional goods. There is no melting down or use of fuel-powered machines—just strong hands and minds.

Please join us on a quest to save 1 million waste tires from harming the land and human health.

Thanks for your contribution, love, and support,

Indosole

#TiresToSoles | #SolesWithSoul

Certified



Corporation





# CROSSWALK

ITS TIME TO STEP INTO A NEW DAY.

Let's cross into new territory—a place of bright ideas, responsible materials, innovative processes, and thoughtful habits. By exploring new options we can affect change, improving our lives and the lives of others. This collection was designed to help you stride into new dimensions.

One example of embracing creative solutions is taking a reusable jar or canteen wherever you go. It may seem odd to some, but it sends a message to the people and places you visit. At Indosole, we keep this mindset when producing and creating. Our soles are made from tires that cause harm to the land and human health when not discarded or reused properly. We are sending a message with our soles, about rethinking waste and reimagining existing materials. We aim to make people aware of what happens to waste, and who it affects. This is a challenge to everyone to think consciously and cross over into new territory.











# SAN FRANCISCO · BALI, INDONESIA

FROM THE SANDY BEACHES OF BALI TO THE URBAN HUSTLE OF SAN FRANCISCO, WE INVITE YOU DOWN A PATH THAT INTERSECTS AT A BEAUTIFUL PLACE WE CALL "BALIFORNIA" WHERE VIBRANT COLOR MEETS FUNCTIONAL COMFORT.



## 100% REPURPOSED TIRE SOLES

Our signature soles are made of 100% repurposed tire, salvaged from local mechanics and landfills. The tires are sanitized and cut to shape by hand.



## EARTH FRIENDLY PACKAGING

Our packaging and hangtags are made from recycled and repurposed materials.



## VEGAN MATERIALS

Our footwear uppers are 100% vegan materials.



## ORGANIC COTTON

All of our canvas footwear features 100% organic cotton that is locally sourced, sewn tight and durable.



## HAND-DYED INDONESIAN BATIK

Our batik is hand-dyed with traditional Balinese wax-resist methods that are free from toxic chemicals and fuel powered machinery.





THE STRUCTURE OF OUR

# SANDAL



TIRE



INNER TUBE



WATERPROOF



ARCH SUPPORT



SANDAL SOLES

**100% REPURPOSED  
RUBBER TIRE**

SANDAL STRAPS

**TIRE INNER TUBE STRAPS  
AND COMFORTABLE NYLON  
TOE THONG**

BUILT TO LAST

**DURABLE, LIGHT, AND  
WATER RESISTANT**

BUILT WITH CARE

**RESPONSIBLY CRAFTED**

SANDAL INSOLES

**CUSTOM MOLDED EVA FOAM  
WITH ARCH SUPPORT AND  
HEEL PADDING**

010







WE LIKE TO CALL THEM

# INDOS

011



TIRE



RESPONSIBLY  
MADE



ORGANIC  
COTTON



MACHINE  
WASHABLE

SHOE SOLES

**100% REPURPOSED  
RUBBER TIRE**

RESPONSIBLY CRAFTED

**NO ANIMALS OR FUEL-  
POWERED MACHINERY**

LOW MAINTENANCE

**FOLDABLE FOR TRAVEL  
MACHINE WASHABLE**

SHOE UPPERS

**CUSTOM DYED  
ORGANIC CANVAS**

SHOE INSOLES

**SOFT EVA FOAM INSOLE  
WITH ARCH SUPPORT  
+ REMOVABLE FOOTBED**



INDOSOLE.COM



012

ELEMENTS 2016 COLLECTION







## WOMEN'S COLLECTION

ALL ITEMS ARE CUSTOM DESIGNED AND FITTED WITH YOU IN MIND. WE COMBINE THE COMFORTABLE, EASY-GOING LIFESTYLE OF CALIFORNIA WITH THE VIBRANT COLORS OF BALI. EVERYTHING IS RESPONSIBLY CRAFTED SO YOU CAN FEEL GOOD ABOUT THE PRODUCTS THAT ARE A PART OF YOUR LIFE.

014



BLACK



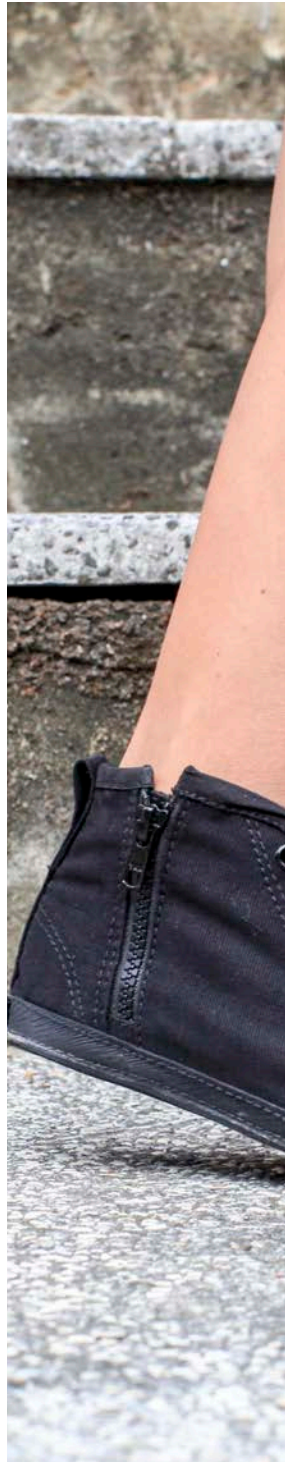
CREAM



ELEMENTS 2016 COLLECTION

## THE KOTA

Meaning "city" in Indonesian, the new and improved Kota was designed with urban dwellers in mind and is the perfect shoe for people with active lifestyles. Featuring our signature tire soles, this shoe adds edge to any outfit. Zip it up, zip it down, get out on the town.





### FEATURES

- 100% handcrafted with repurposed tire sole
- No animals, no fuel powered machinery
- High quality stitching
- EVA foam insole with arch support
- Embroidered woven logo labels
- Innertube toe cap - Made from real tire inner tubes
- Zipper for easy on and off and breathability
- Custom dyed organic canvas uppers
- Machine washable - Dry in the sunshine
- Custom molded footbed
- 12Oz canvas
- YKK zipper



# THE PANTAI "BEACH" SHOE

Meaning "beach" in Indonesian, the updated Pantai features a fresh new look and improved fit. This machine washable slip-on makes going through airport security a breeze—a versatile option for life in motion. It's the perfect leisure shoe for world travelers, casual explorers, and cocktail goers.



MAUVE



YELLOW & GREY STRIPES



GREY STRIPES



NAVY STRIPES



EMERALD



CHARCOAL WITH BLUE TIE DYE LINER



YELLOW & GREY TIE DYE LINER



CORAL RED



BLACK



BLACK PALM







**FEATURES**

- 100% repurposed tire soles
- Vegan canvas uppers
- Machine washable and removable footbed
- Internal elastic for customized fit



**FEATURES**



- 1 cm wide crisscross straps across top of foot
- 1 cm wide heel strap
- Vegan suede foot bed
- Repurposed tire soles
- Hidden elastic on heel strap for customized fit



NATURAL



BLACK

## THE BIKU

Named after our favorite restaurant in Bali, the updated Biku sandal is a unique combination of function and style. Strappy and versatile, it can be dressed up for a party or dressed down for a casual day at the park. The new custom molded footbed with arch support means you enjoy supreme comfort wherever you are.







COBALT TRAILS



BLACK



GARUDA



BLACK PALM



MAUVE

## THE IKHANNA

A nomad's lifestyle is all about versatility. While transitioning from beach mode to city mode, Indosole has you covered. The updated Ikhanna offers our ladies the support of an urban walking shoe mixed with fashionable flair. It features a new custom molded footbed with arch support so that you're comfortable and ready for whatever adventure lies ahead.





#### FEATURES

100% handcrafted women's leisure sandal  
No animals. No fuel powered machinery  
Vegan suede braided toe thong  
High quality stitching. YKK zipper in rear  
EVA foam Insole wrapped with vegan suede footbed



---

## TAN BURLAP

The combination of vegan suede uppers, burlap straps, and our signature tire soles make this ultra comfy sandal unlike anything out there. Outdoor festival or all-day outing? Bring it on.

022



THE TAN BURLAP

---

**FEATURES:** 100% handcrafted sandal / No animals, no fuel powered machinery / vegan suede footbed / EVA foam insole / .5 inch wide burlap strap

---

## THE INNERTUBED

With soles made from tire inner tubes, this sandal is incredibly lightweight, flexible, and comfy. These slip-on-and-go sandals are perfect for quick trips to the beach, lounging around the house, or a day out with your friends.



BLACK



PINK PALM

---

**FEATURES:** 100% handcrafted flip-flop / No animals, no fuel powered machinery / nylon toe thong / EVA foam insole with embedded arch support / Pink Palm insole wrapped in vegan suede / .5 inch wide tire inner tube straps or pink palm canvas straps

---

## THE DOUBLE 6

Named after the famous “Double 6” road in Bali, these flip-flops also happen to be made from 66% repurposed materials. The Double 6 features repurposed tire inner tube straps, waterproof vegan uppers, and embedded arch support so that you can hop around tide pools during the day and roll right into the evening in supreme comfort.



BLACK

---

**FEATURES:** 100% handcrafted flip-flop / No animals, no fuel powered machinery / Vegan leather footbed / Durable & water resistant / 15mm wide strap made from 100% repurposed inner tubes / EVA foam insole











# INDO GOODS

CROSSWALK 2017





# CANVAS BEACH BAGS

A top selling item in our line, this is no ordinary beach bag. The lining is made from repurposed rice bag, making the inside waterproof and easy to clean. The canvas is double stitched with large pockets on both sides, perfect for a water container, wine bottle, or your dirty flip flops.

026



MOTORBIKE



BALIFORNIA



BARONG

CUSTOMIZE YOUR OWN BAG-DESIGN SERVICES ARE AVAILABLE



FRONT



INSIDE



MORE INFO AT [WWW.CUSTOMTOTE.CO](http://WWW.CUSTOMTOTE.CO)

ELEMENTS 2016 COLLECTION

**Custom**  
TOTE  
COMPANY





indo







INDOSOLE LOGO HAT

## INDO TRUCKER HATS

Anyone who loves sun drenched adventures should have a high quality snapback in their hat arsenal. Our adjustable mesh trucker hats come with a screenprinted "indo" logo or new archipelago graphic—a reminder of Indonesia's 17,000+ islands begging to be explored.







—  
030

—  
ELEMENTS 2016 COLLECTION





# MEN'S COLLECTION

STICKING TO THE CLASSICS, BUT WITH OUR OWN CUSTOM DESIGNS AND FITS TO MAKE THEM INDO ORIGINALS. WHERE STYLE MEETS EASE. ALL RESPONSIBLY MADE.





032



BLACK



CREAM



## THE KOTA

Meaning “city” in Indonesian, the new and improved Kota was designed with urban dwellers in mind and is the perfect shoe for people with active lifestyles. Featuring our signature tire soles, this shoe adds edge to any outfit. Zip it up, zip it down, get out on the town.





#### FEATURES

- 100% handcrafted with repurposed tire sole
- No animals, no fuel powered machinery
- High quality stitching
- EVA foam insole with arch support
- Embroidered woven logo labels
- Innertube toe cap - Made from real tire inner tubes
- Zipper for easy on and off and breathability
- Custom dyed organic canvas uppers
- Machine washable - Dry in the sunshine
- Custom molded footbed
- 12Oz canvas
- YKK zipper





**FEATURES**

EVA foam insole with arch support  
Embroidered woven logo labels  
Voxing made from tire inner tubes  
Custom dyed organic canvas uppers  
Machine washable-dry in the sunshine





BLACK



SOARING EAGLE  
BLACK/WHITE

## THE JJ

The JJ is short for “jalan-jalan,” an Indonesian term for cruising around and seeing the sights. Our JJ is new and improved with vulcanized foxing. This lace-up is ideal for being out and about, from walking your dog around the neighborhood to cycling down the street to meet friends.







BLACK



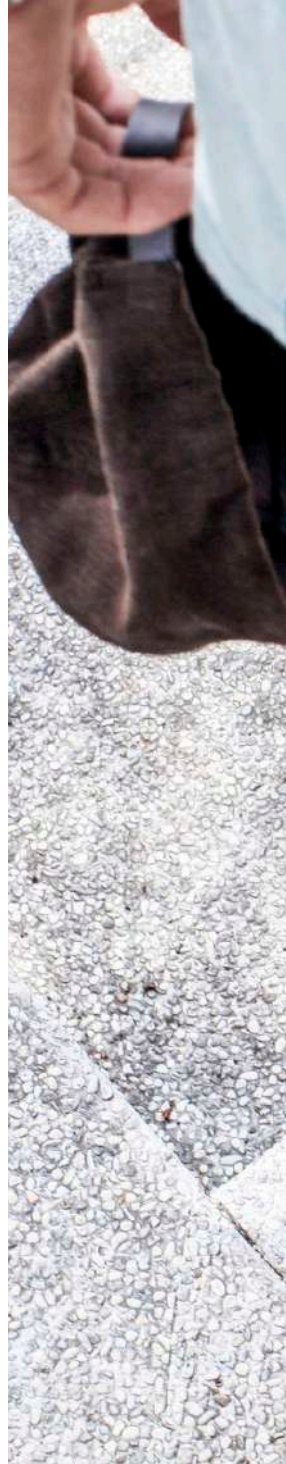
STONE



CHOCOLATE

# THE PRAHU

Inspired by the word “boat” in Indonesian, the Prahu is our take on the classic boat shoe. Transition from casual settings to formal occasions in this staple that should be in every guy’s closet.





## FEATURES



- 100% Repurposed tire sole
- No animals, no fuel powered machinery
- Custom dyed organic canvas uppers
- High quality stitching
- EVA foam insole with arch support
- Extra heel padding for increased comfort
- Embroidered woven logo labels
- Machine washable and removable footbed

037







## FEATURES

- 100% handcrafted with repurposed tire sole
- No animals, no fuel powered machinery
- Custom dyed canvas uppers. High quality stitching
- EVA foam insole w/ arch support & striped denim footbed
- Extra heel padding for increased comfort
- Embroidered woven logo labels
- Machine washable and removable footbed

038





NAVY STRIPES



GREY STRIPES



STONE GREY



BLACK



CHARCOAL WITH BLUE TIE DYE LINER

## THE PANTAI "BEACH" SHOE

Meaning "beach" in Indonesian, the updated Pantai features a fresh new look and improved fit. This slip-on makes going through airport security a breeze—a versatile option for life in motion. It's the perfect leisure shoe for world travelers, casual explorers, and cocktail goers.





www.ek-i.co.jp  
K探偵・警備

渋谷  
ファイヤー通り  
5455-0040

神南  
1106

通学  
女  
渋谷





041

ゆてあけの  
スハゲツテ  
洋館屋  
五右衛門

EST. 1980 GLOBE

Ocean Lounge

SOLES WITH SOUL  
SOLES WITH SOUL

 **SANDAL COLLECTION**

CROSSWALK 2017

INDOSOLE.COM





# — INDO ORIGINALS SINCE 2009.

042

## THE GREEN GRASS MAT

— Featuring hand woven grass from the fields of Indonesia, this unique sandal works for a BBQ, casual outdoor wedding, and everywhere in between. Keep the Grass Mat dry to preserve its features.



THE GREEN GRASS MAT

**FEATURES:** 100% handcrafted sandal / No animals, no fuel powered machinery / handwoven grass footbed / EVA foam insole / .5 inch wide strap

---

## THE TAN BURLAP

The combination of vegan suede uppers, burlap straps, and our signature tire soles make this ultra comfy sandal unlike anything out there. Outdoor festival or all-day outing? Bring it on.



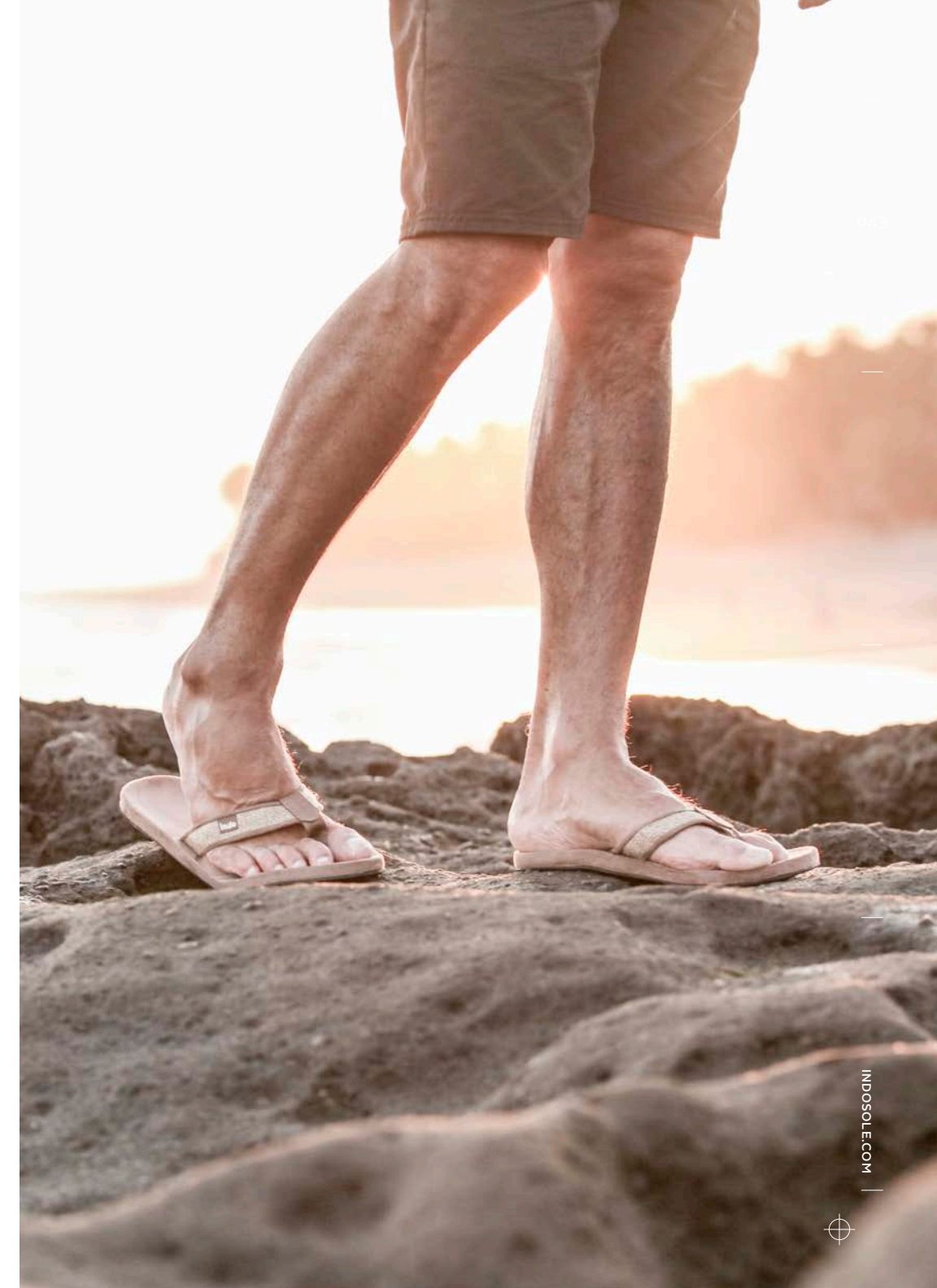
THE TAN BURLAP

**FEATURES:** 100% handcrafted sandal / No animals, no fuel powered machinery / vegan suede footbed / EVA foam insole / .5 inch wide burlap strap /

---

CUSTOM MOLDED FOOTBED WITH IMPROVED  
ARCH SUPPORT FOR SUPREME COMFORT.













# THE DOUBLE 6

046

Named after the famous “Double 6” road in Bali, these flip-flops also happen to be made from 66% repurposed materials. The Double 6 features repurposed tire inner tube straps, waterproof uppers, and embedded arch support so that you can hop around tide pools during the day and roll right into the evening in supreme comfort. Low-profile, ultra flexible, and durable on all terrains.



BLACK

**FEATURES:** 100% handcrafted flip-flop / No animals, no fuel powered machinery / Vegan leather footbed / Durable & water resistant / .5 inch wide strap made from 100% repurposed innertubes / EVA foam insole

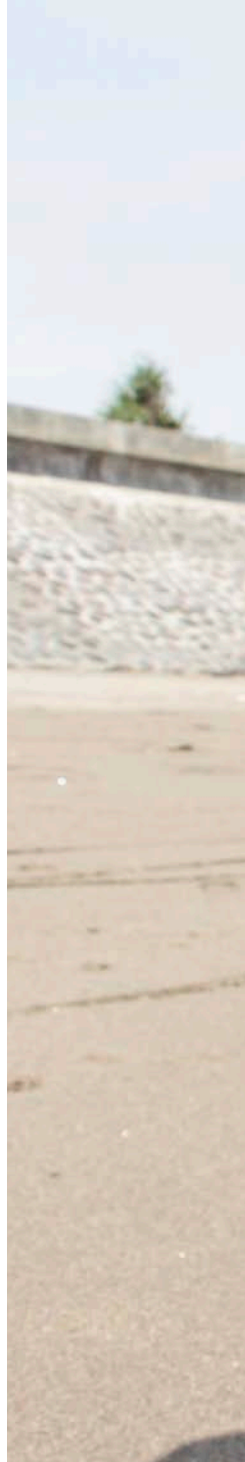
# THE INNERTUBED

Versatile, flexible, and light enough to throw in your backpack with all your camping gear. The repurposed inner tube straps and soles are buffed, giving you a better grip on life.



BLACK

**FEATURES:** 100% handcrafted flip-flop / No animals or fuel powered machinery / Durable and water resistant / Nylon toe thong / .5 " wide straps / Sole and straps made from 100% repurposed truck tire innertube / High quality stitching / EVA foam insole with embedded arch support / Low profile and flexible











# MEN'S APPAREL

CROSSWALK 2017

RNIA





# THE GRAPHIC TANK

An essential for those warm days in the park or rides to the beach. Available with either a traditional Balinese Barong mask, Indosole logo or our custom designed Balifornia logo.

050



BARONG GRAPHIC  
COLORED



BALIFORNIA  
GRAPHIC



INDOSOLE LOGO  
BLACK



BARONG GRAPHIC  
BLACK/WHITE

**FEATURES:** 100% soft organic cotton / Custom collar fit / Sizes available: Small, Medium, Large, XL & XXL / Screen printed label inside

# THE GRAPHIC TEE

A slim fit tee made with soft organic cotton. Custom collar line and sleeves.



MOTORBIKE GRAPHIC-BLACK



BALIFORNIA GRAPHIC



BARONG GRAPHIC-COLORED



BARONG GRAPHIC-BLACK



INDOSOLE GRAPHIC-BLACK

**FEATURES:** 100% soft organic cotton / Custom collar Fit / Sizes available: Small, Medium, Large XL, & XXL  
Screen printed label inside





051

INDOSOLE.COM





# DISPLAY RACKS

Indosole's retail floor display racks are low-cost shipping and easy to set up. The racks are double sided with removable arms and can be placed in the middle of the floor or against a wall. Rattan hangers are provided for each pair of sandals/shoes.

052

## SMALL DISPLAY RACK

DIMENSIONS:

5'H X 2.5'W X 4'D

HOLDS 50 PAIRS

## LARGE DISPLAY RACK

DIMENSIONS:

5'H X 5'W X 4'D

HOLDS 100 PAIRS



indosole

#soleswithsoul

053









# INDOSOLE CONTACT

## INDOSOLE OFFICES:

Bali, Indonesia : Manufacturing & Local Vibe Creation

San Francisco, CA : Indo HQ, Church of Surf

3830 Noriega St. San Francisco, CA 94122

**INDO@INDOSOLE.COM | INDOSOLE.COM**

PH: 415-742-5662

FAX: 415-520-9578

#TIRESTOSOLES | #SOLESWITHSOUL

055

INDOSOLE.COM









**TEDx**

WHAT'S THE POINT OF REPURPOSING EXISTING MATERIALS?  
WHAT KIND OF PROGRESSIVE OPTIONS ARE OUT THERE?  
WHAT CAN WE AS INDIVIDUALS DO TO HELP ALLEVIATE THE  
WORLD'S WASTE PROBLEM?

INDOSOLE FOUNDER, KYLE PARSONS, DISCUSSES IN HIS  
RECENT TEDx TALK "REDESIGNING OUR CONSUMER HABITS"

WATCH KYLE'S TALK ONLINE:  
TEDxUBUD ON MAY 28, 2016







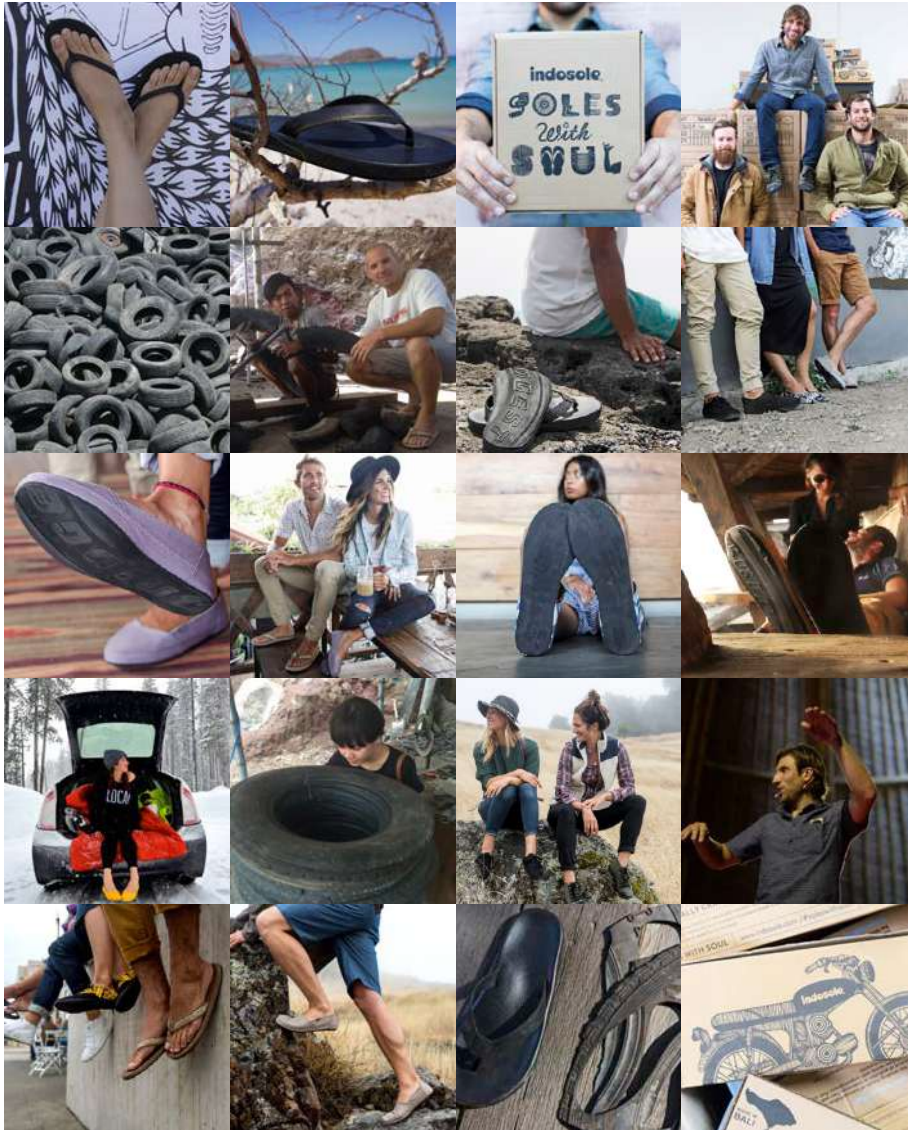
"A GOOD HUMAN IS SOMEONE WHO SPREADS POSITIVITY, LIVES RESPONSIBLY, TAKES CARE OF OUR NATURAL ENVIRONMENT, AND INSPIRES OTHERS TO PURSUE THEIR INTERESTS AND PASSIONS TO THE FULLEST."

**GOOD HUMAN**

*Chris Childers*







/INDOSOLE



@INDOSOLE



/INDOSOLE

#SOLESWITHSOUL

# JAPAN ADDITIONAL COLOR

## BIKU SHOE WOMENS



BLACK PALM

## IKHANNA SHOE WOMENS



TRAILS  
EMERALD/BLACK

## INNERTUBED WOMENS & MENS



BLACK PALM



CAMO

## DOUBLE6 WOMENS & MENS



BLACK PALM FULL



CAMO



BLACK PALM STRAP